

An Imperative for Excellence

EMPOWER

THE TEXAS A&M UNIVERSITY SYSTEM

An Imperative for Excellence

EMPOWER

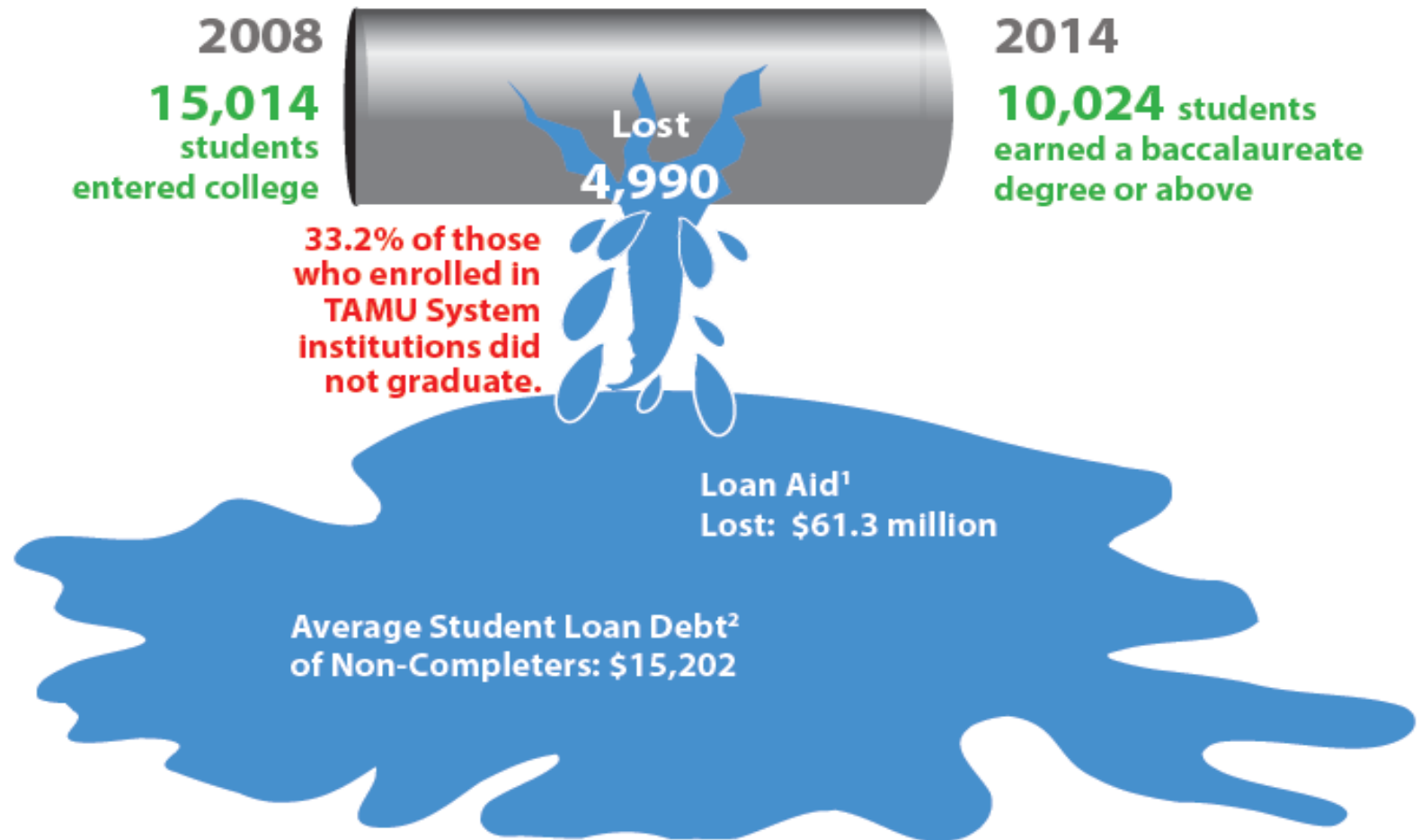
THE TEXAS A&M UNIVERSITY SYSTEM

The Texas A&M University System



TAMU System Pipeline Leak

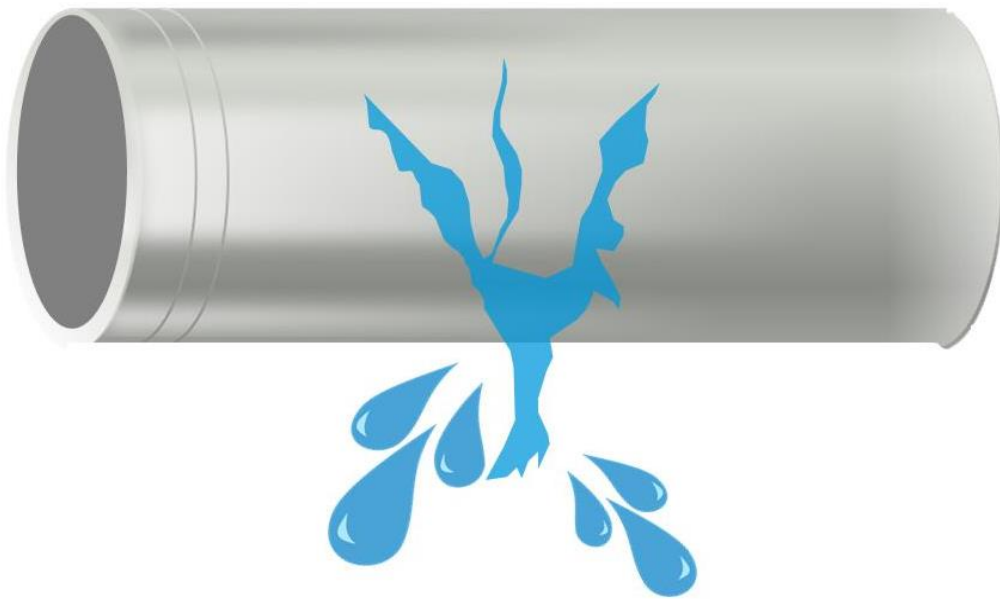
Lost opportunity, lost investment



EmpowerU



An Imp



THE TEXAS A&M UNIVERSITY SYSTEM

The Texas A&M University System



EmpowerU

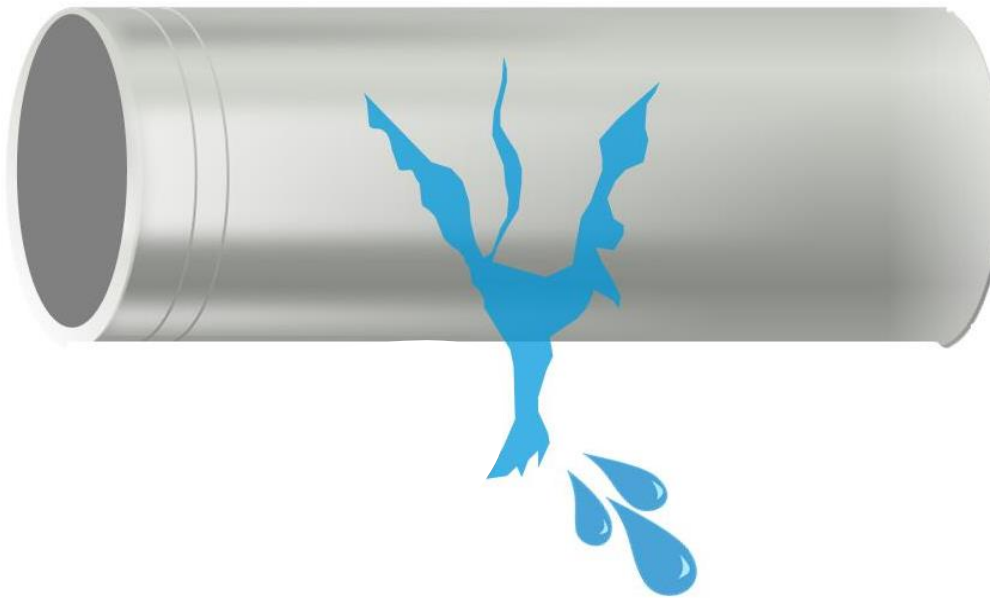


Analytics/Metrics

THE TEXAS

RSITY SYSTEM

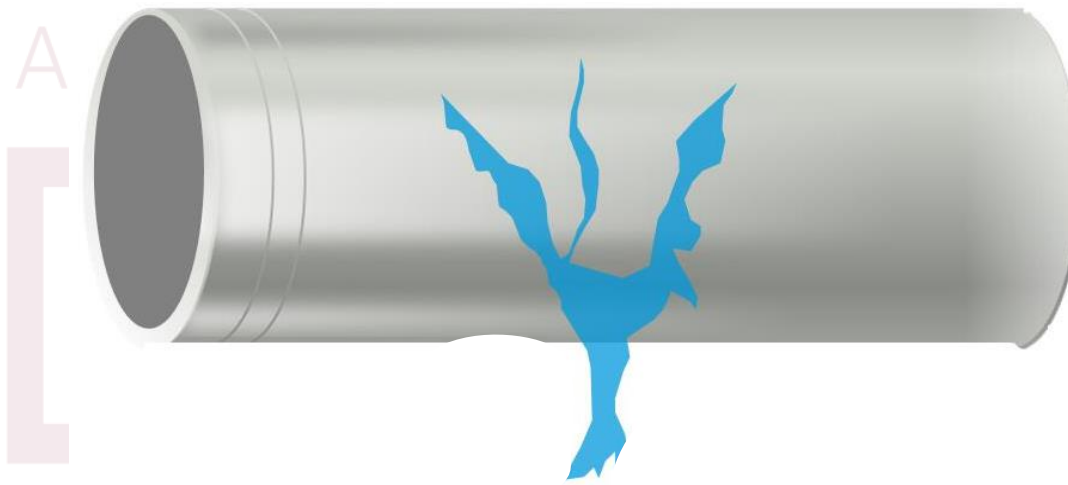




Analytics/Metrics

- Applications/Admissions/Enrollment
- First Year Persistence Rate
- Percent Accumulating Hours (30/60/90)
- Fourth Year Graduation Rate
- Sixth Year Graduation Rate
- Time to Degree (Years)
- Number of Degrees Awarded
- Average Debt After Graduation
- Average 1st, 3rd, and 5th Year Wages
- Transfer Success
- First Year Persistence Rate
- Second Year Graduation Rate
- Fourth Year Graduation Rate

THE TEXAS A&M UNIVERSITY SYSTEM



Analytics/Metrics

- Applications/Admissions/Enrollment
- First Year Persistence Rate
- Percent Accumulating Hours (30/60/90)
- Fourth Year Graduation Rate
- Sixth Year Graduation Rate
- Time to Degree (Years)
- Number of Degrees Awarded
- Average Debt After Graduation
- Average 1st, 3rd, and 5th Year Wages
- Transfer Success
- First Year Persistence Rate
- Second Year Graduation Rate
- Fourth Year Graduation Rate

Student Learning Outcomes

- Ethical & Social Responsibility
- Globalization & Diversity
- Discipline Specific Knowledge
- Integration of Broad Knowledge
- Communication
- Problem Solving/Critical Thinking

An Imperative for Excellence

Student Learning Outcomes

THE TEXAS A&M UNIVERSITY SYSTEM

Ethical & Social Responsibility



- Students will articulate multiple cultural perspectives in local, national and global communities. Students will identify and analyze social and ethical challenges, including possible resolutions.
- **Outcome:** Upon completion of their degree program, students will be able to demonstrate an understanding of and use ethical reasoning for responsible personal and professional decision making in a culturally and ethnically diverse world.
- **Measures:**
 - Employer assessment of academic preparation
 - Student leader learning outcomes projects
 - Case study analysis
 - Simulation test
 - Ethical responsibility and academic honesty survey
 - Professional ethics examination



Globalization & Diversity

- Students will utilize multidisciplinary perspectives to evaluate initiatives that have been employed to address global issues. Students will describe the nature of global interdependence and its impacts. Students will articulate an understanding of cultural differences from diverse perspectives in specific disciplines.
- **Outcome:** Upon completion of degree program, students will be able to analyze the impact of multiple factors on interconnectedness of diverse peoples in the global environment.
- **Measures:**
 - Global perspectives inventory
 - Intercultural competence project
 - Course embedded assessment
 - Portfolios
 - Essay sampling
 - EBI Exit Survey

Discipline Specific Knowledge

- Students will perform satisfactorily on licensure or certification exams necessary for professional status within their chosen careers, where applicable. Students will demonstrate skills required for success in their discipline. Students will identify and propose solutions to challenges or problems within their field. Students will identify, analyze, apply and evaluate disciplinary theories and concepts.
- **Outcome:** Upon graduation, students will demonstrate mastery of the depth of knowledge required for their respective degrees.

- **Measures:**

ETS Major Field Test

Graduating student survey

Capstone Portfolio

Recitals/Performances

NCLEX

TEGES

LPC

Juries

Case Analysis

Area Concentration

Achievement test

Clinical Mock Boards

Senior Exit Examination

Integration of Broad Knowledge



- Students will demonstrate mastery of the general education core curriculum. Students will apply broad knowledge to academic disciplines and professional or technical fields.
- **Outcome:** Upon completion of degree program, students will be able to synthesize knowledge from general and specialized studies.
- **Measures:**
 - Course embedded assessment
 - Core curriculum assessment
 - e-Portfolios of gathered work |
 - Graduating Senior presentations
 - MAPP Proficiency profile

THE TEXAS A&M UNIVERSITY SYSTEM



Communication

- Students will use multiple formats and technologies to communicate ideas effectively in large and small group settings. Students will apply fundamental writing strategies such as invention, drafting, revising and editing to the development of effective academic and professional written communications. Students will deliver effective oral presentations in a variety of settings. Students will demonstrate the ability to incorporate multiple informational resources in projects and/or papers with appropriate citations.
- **Outcome:** Upon completion of their degree program, students will be able to express ideas clearly and coherently orally, in writing and electronically to a diverse range of audiences and interact with others in large and small group settings.

- **Measures:**

Course embedded assessment
ETS Proficiency Profile
Writing across the curriculum
Employer surveys
Portfolios


Collegiate Learning Assessment
MAPP Proficiency Profile

Problem Solving/Critical Thinking



- Students will construct well-supported, clearly articulated and sustained arguments. Students will demonstrate an ability to justify conclusions based on evidence. Students will interpret, analyze and evaluate statements, graphs, articles and/or questions by discriminating among different degrees of credibility, accuracy and reliability of inferences drawn from data and recognizing assumptions of sources. Students will demonstrate the ability to identify, analyze and formulate solutions to complex problems.
- **Outcome:** Upon completion of degree program, students will be able to demonstrate critical thinking, including the ability to explain issues, find, analyze and select appropriate evidence, and construct a cogent argument that articulates conclusions and their consequences.
- **Measures:**
 - Critical thinking assessment test
 - Student experience in Research University Assessment
 - ETS Proficiency Profile
 - Collegiate Learning Assessment
 - ETS Tasks in critical thinking
 - MAPP Proficiency Profile
 - California Test of critical thinking skills test
 - Collegiate assessment of academic proficiency test
 - CAAP Critical Thinking Assessment
 - EBI Exit Survey
 - NCLEX Licensure Exam





Faculty Recruitment and Retention
Advising
Student Affairs

Analytics/Metrics

- Applications/Admissions/Enrollment
- First Year Persistence Rate
- Percent Accumulating Hours (30/60/90)
- Fourth Year Graduation Rate
- Sixth Year Graduation Rate
- Time to Degree (Years)
- Number of Degrees Awarded
- Average Debt After Graduation
- Average 1st, 3rd, and 5th Year Wages
- Transfer Success
- First Year Persistence Rate
- Second Year Graduation Rate
- Fourth Year Graduation Rate

Student Learning Outcomes

- Ethical & Social Responsibility
- Globalization & Diversity
- Discipline Specific Knowledge
- Integration of Broad Knowledge
- Communication
- Problem Solving/Critical Thinking



Analytics/Metrics

- Applications/Admissions/Enrollment
- First Year Persistence Rate
- Percent Accumulating Hours (30/60/90)
- Fourth Year Graduation Rate
- Sixth Year Graduation Rate
- Time to Degree (Years)
- Number of Degrees Awarded
- Average Debt After Graduation
- Average 1st, 3rd, and 5th Year Wages
- Transfer Success
- First Year Persistence Rate
- Second Year Graduation Rate
- Fourth Year Graduation Rate

Student Learning Outcomes

- Ethical & Social Responsibility
- Globalization & Diversity
- Discipline Specific Knowledge
- Integration of Broad Knowledge
- Communication
- Problem Solving/Critical Thinking

LearningU

Ed.
Leadership

STEM

Virtual
Instruction

Teacher
Recruitment

Partners in
Education

Research

Alignment

Reform

Implementation

Superintendent Feedback

STEM

Bilingual
Education

Special
Education

“Globalization”

Implementation

“Research”

Focus Area

Activities

Success Measure

1. Design educational leadership programs to meet the needs of public, private, and charter PreK-12 schools with highly skilled leaders.

"Boot camps"
Literacy Courses
Refined Ed. Admin. Courses
New EdD. Program

- Employment rates of principals
- Administrator longevity in the field
- Principal TExES scores

2. Improve PK-6 teaching practices in STEM areas with a focus on mathematics.

Math /Science Ed.
conference ME by the Sea
Elem. Math /Science
Modules
Aggie STEM Summer Camp
Tarleton Academy of Math
Ed.

- EC-6 Generalist scores in the mathematics domain
- System elementary math endorsement participants

3. Prepare teacher candidates to teach in a virtual K-12 learning environment.

Virtual Instruction
Endorsement

- Virtual K-12 teaching and learning endorsement program
- System virtual instruction participants

4. Build teacher recruitment programs to attract academically talented and diverse students.

Renaissance Scholars
program to attract talented
and diverse students
Recruitment videos

- System website for recruiting – Referrals
- Individual university recruitment projects

Focus Area

Activities

Success Measures

5. Develop and strengthen community college, district, regional service center, and other local partnerships.

All universities have strong relationships with local area school districts and area community colleges and regional education service centers.

- Articulation Agreements
- Memoranda of Understanding
- Other Partnership Agreements

6. Collaborate on research and development with partnering institutions.

System Collaborative Research
United Way of Greater Houston Research Collaborative

- Collaborative Research Projects
- Collaborative Grants System Funds Acquired
- Research P-20 Research Conference Participation

7. Align coursework and programs internally and externally.

iListo! project, (\$1.2 million)
Think-Tanks, half-day sessions

- Pedagogy & Professional Responsibilities Test Scores
- Content TExES Scores

8. Develop efficient, responsive, and sustainable models for educator preparation.

Focus on SPED, Bilingual & STEM
Lab school combined with a co-teaching model

- Employment rates
- Principal survey of beginning teachers
- Surveys from program graduates

An Imperative for Excellence

Questions or Comments?

THE TEXAS A&M UNIVERSITY SYSTEM