



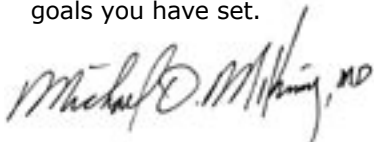
## MyWelcome

Choosing the right college is one of the most important and most challenging decisions you will make in your life. You are not only looking at academics, but cost, location, student activities and campus size. At The Texas A&M University System, we have 10 campuses that offer a variety of educational, geographic, demographic and cultural opportunities for undergraduates that we know will provide you with a perfect fit to your needs.

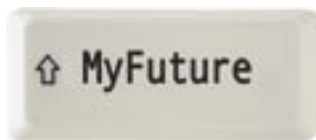
I invite you to take a look at all of the universities within the A&M System. Whether you're interested in art, education, architecture, agriculture, engineering, medicine, or anything in between, I'm sure you'll find a university that has just what you're looking for.

This brochure will give you and your family an opportunity to learn about each of our universities and to provide websites and contact information with which you can learn even more. As a parent who has sent two kids to college and with one more to go, I realize that getting information about your options is the most important step you can take before making a decision.

I wish you the best of luck in your search, and know that The Texas A&M University System can provide you with the means to achieve the educational goals you have set.



Michael D. McKinney, M.D.  
Chancellor  
The Texas A&M University System



Texas A&M University .....	4
Texas A&M University at Galveston .....	5
Prairie View A&M University .....	6
Tarleton State University .....	7
Texas A&M International University .....	8
Texas A&M University-Corpus Christi .....	9
Texas A&M University-Kingsville .....	10
West Texas A&M University .....	11
Texas A&M University-Commerce .....	12
Texas A&M University-Texarkana .....	13
MyChecklist.....	14
Help.....	15

**ATM Texas A&M University**



"Gig 'em, Aggies!"

Four-year university  
133 years old  
College Station,  
TEXAS  
United States

My URL: [www.tamu.edu](http://www.tamu.edu)

**MY DETAILS**

Enrollment (Fall 2006)	45,380
Average cost per 15 SCH (Fall 2006)	\$3,483
Average undergraduate class size	39.4
Student-to-faculty ratio	20:1
Average financial aid award	\$11,985
Average freshmen SAT/ACT	SAT 1202 / ACT 26

**GENERAL**

**MAJORS**

103 undergraduate degrees.  
Anthropology; microbiology;  
communications; business;  
telecommunication media studies;  
forest science; microbiology;  
zoology; aerospace engineering;  
nuclear engineering; atmospheric sciences; architecture; wildlife & fisheries sciences; more...and graduate and online degrees.



**The Aggies are in your extended network.**



**ABOUT ME**

Located in College Station, which together with the city of Bryan, has about 120,000 people. We're about 100 miles northwest of Houston, 120 miles northeast of Austin and 200 miles south of Dallas.

Nickname: Aggies  
Mascot: Reveille  
Colors: Maroon and white

**INTERESTS**

More than 800 student organizations — recreational sports; community service groups; academic clubs; performance groups; special interest clubs; more...

**SPORTS**

Baseball; basketball; equestrian; football; golf; soccer; softball; swimming & diving; tennis; track & cross country; volleyball.

**MORE ABOUT ME**

**Admissions**  
979-458-0427  
[admissions.tamu.edu](http://admissions.tamu.edu)

**Financial aid and scholarships**

979-845-3236  
[financialaid.tamu.edu](http://financialaid.tamu.edu)



**TAMU HAS 10 FRIENDS**

<b>TAMUG</b> 	<b>PVAMU</b> 	<b>Tarleton</b> 	<b>TAMIU</b> 	<b>TAMUCC</b> 
<b>TAMUK</b> 	<b>WTAMU</b> 	<b>TAMUC</b> 	<b>TAMUT</b> 	<b>TOM</b> 

GALVESTON, TEXAS

ESCAPE AND EXPLORE.

Home | Browse | Search | Invite | Mail | Blog | Favorites | Groups | Events | Teams | Music | Profs |

## Texas A&M University at Galveston



"The ocean is our classroom and our playground."

Four-year university  
45 years old  
Galveston,  
TEXAS  
United States

My URL: [www.tamug.edu](http://www.tamug.edu)

### MY DETAILS

<i>Enrollment (Fall 2006)</i>	<i>1,553</i>
<i>Average cost per 15 SCH (Fall 2006)</i>	<i>\$2,825</i>
<i>Average class size</i>	<i>14.3</i>
<i>Student-to-faculty ratio</i>	<i>16:1</i>
<i>Average financial aid award</i>	<i>\$8,500</i>
<i>Average freshmen SAT/ACT</i>	<i>SAT 1070 / ACT 23</i>

### GENERAL

#### MAJORS

Nine undergraduate degrees. Marine biology; marine sciences (oceanography); marine engineering technology; marine transportation; marine fisheries; maritime systems engineering (ocean/civil); maritime administration (policy/business); maritime studies (liberal arts); ocean and coastal resources; more...and graduate degrees.



The Sea Aggies are in your extended network.



#### ABOUT ME

Located in historic Galveston (population 58,000), the campus provides students with immediate access to Galveston Bay, the Gulf of Mexico and Houston.

Nickname: Sea Aggies  
Colors: Maroon and white

#### INTERESTS

Aggie crew (rowing); drill team; student government; dive club; SALT (Sea Aggies Learning Traditions); drama club; fishing club (Aggie Anglers); surf club; ornithology club; fine arts association; marine technology society; more...

#### SPORTS

Sailing; rowing; offshore rowing; intramurals (flag football; tennis; racquetball; soccer; volleyball; basketball; ultimate Frisbee; softball; inner tube water polo; floor hockey; sand volleyball).

#### MORE ABOUT ME

##### Admissions

1-877-322-4443 (1-87-SEAAGGIE)  
[www.tamug.edu/admrc](http://www.tamug.edu/admrc)

##### Financial aid and scholarships

409-740-4500  
[www.tamug.edu/finaid](http://www.tamug.edu/finaid)



#### TAMUG HAS 10 FRIENDS

TAMU



PVAMU



Tarleton



TAMU



TAMUCC



TAMUK



WTAMU



TAMUC



TAMUT



TOM



Prairie View, Texas

Join Us on the Hill.

Home | Browse | Search | Invite | Mail | Blog | Favorites | Groups | Events | Teams | Music | Profs |

## Prairie View A&M University



"Produces productive people."

Four-year university  
131 years old  
Prairie View,  
TEXAS  
United States

My URL: [www.pvamu.edu](http://www.pvamu.edu)

### MY DETAILS

Enrollment (Fall 2006)	8,006
Average cost per 15 SCH	
Resident off campus	\$2,767
On campus	\$6,016
Average class size	29
Student-to-faculty ratio	17:1
Average financial aid award	\$12,000
Average freshmen SAT/ACT	SAT 819/ ACT 16

### GENERAL

#### MAJORS

50 undergraduate degrees. Architecture; nursing; criminal justice; construction science; engineering; psychology; business; communications; English; Spanish; biology; medical technology; drama; music; more...and graduate degrees.



The Panthers are in your extended network.



### ABOUT ME

Prairie View A&M University is located about 40 miles northwest of Houston in Waller County.

Mascot: Panther  
Colors: Purple and gold

### INTERESTS

Intramurals; speech & debate club; rodeo club; sororities; fraternities; student government; symphonic band; urban readers association; club flava; political science club; blackstone pre-law society; more...

### SPORTS

Football; baseball; basketball; bowling; cross country; track & field; volleyball; softball; tennis; golf.

### MORE ABOUT ME

#### Admissions

936-261-1000

Email: [admissions@pvamu.edu](mailto:admissions@pvamu.edu)

[www.pvamu.edu](http://www.pvamu.edu)

#### Financial aid and scholarships

936-261-1000

[www.pvamu.edu/faid](http://www.pvamu.edu/faid)



### PVAMU HAS 10 FRIENDS

TAMU



TAMUG



Tarleton



TAMIU



TAMUCC



TAMUK



WTAMU



TAMUC



TAMUT



TOM





# Stephenville, Texas

ONE OF THE  
**100**  
BEST SMALL TOWNS  
IN THE USA!



Home | Browse | Search | Invite | Mail | Blog | Favorites | Groups | Events | Teams | Music | Profs |

## Tarleton State University



"Bleed purple!"

Four-year university  
108 years old  
Stephenville,  
TEXAS  
United States

My URL: [www.tarleton.edu](http://www.tarleton.edu)

### MY DETAILS

Enrollment (Fall 2006)	9,464
Average cost per 15 SCH (Fall 2006)	\$2,500
Average class size	30
Student-to-faculty ratio	19:1
Average financial aid award	\$4,321
Average freshmen SAT/ACT	SAT 965 / ACT 20.4

### GENERAL

#### MAJORS

67 undergraduate degrees.  
Agronomy; art; aviation;  
chemistry; communications;  
computer information systems;  
criminal justice; environmental  
engineering; human sciences;  
hydrology; nursing; range  
management; theater; more...and  
graduate and online degrees.  
The university also offers upper-  
division and master's-level degree  
programs at its center in Killeen.



The Texans are in your  
extended network.



### ABOUT ME

Located one hour southwest of Fort Worth in Stephenville (population 16,900), Tarleton serves as the educational and cultural center of the Cross Timbers Region.

Mascot: Texans  
Colors: Purple and white

### INTERESTS

Cricket club; water ski club; soccer; rifle club; dairy club; sororities; fraternities; entomology society; student wildlife society; Tarleton bands; Tarleton rangers; mixed media; hydrology club; inline hockey; more...

### SPORTS

Football; baseball; basketball; cross country; track & field; volleyball; softball; tennis; golf.

### MORE ABOUT ME

#### Admissions

1-800-687-8236  
[www.tarleton.edu/~admissions](http://www.tarleton.edu/~admissions)

#### Financial aid

254-968-9070  
[www.tarleton.edu/~finaid](http://www.tarleton.edu/~finaid)

#### Scholarships

254-968-9922  
[www.tarleton.edu/~scholars](http://www.tarleton.edu/~scholars)

### Tarleton HAS 10 FRIENDS

TAMU



TAMUG



PVAMU



TAMIU



TAMUCC



TAMUK



WTAMU



TAMUC



TAMUT



TOM



# Laredo, Texas

## Gateway to Mexico

Home | Browse | Search | Invite | Mail | Blog | Favorites | Groups | Events | Teams | Music | Profs |

### Texas A&M International University



"From all over the world and just around the corner."

Four-year university  
37 years old  
Laredo,  
TEXAS  
United States

My URL: [www.tamiu.edu](http://www.tamiu.edu)

#### MY DETAILS

Enrollment (Fall 2006)	4,917
Average cost per 15 SCH (Fall 2006)	\$2,339
Average class size	23
Student-to-faculty ratio	16:1
Average financial aid award	\$2,300-\$15,000
Average freshmen SAT/ACT	SAT 880 / ACT 18

#### GENERAL

##### MAJORS

51 undergraduate degrees. Urban studies; environmental science; Latin American studies; music; biology; nursing; business; education; fitness; art; communication; math; English; sociology; chemistry; political science; Spanish; social work; more...and graduate degrees and online degree in criminal justice (M.S.).



### The Dustdevils are in your extended network.



#### ABOUT ME

Located in the vibrant bilingual, bicultural city of Laredo (population 220,000), which manages to retain its small-town charm despite its size.

Mascot: Dustdevil  
Colors: Maroon and silver

#### INTERESTS

Recreational sports; social work club; ballet folklorico; drama club; film club; math society; art ink; biology club; student government; sororities; fraternities; Habitat for Humanity; students in free enterprise (SIFE); guitar club; more...

#### SPORTS

Soccer; baseball; basketball; cross country; cheer team; golf; volleyball.

#### MORE ABOUT ME

**Admissions**  
956-326-2270  
[www.tamiu.edu/whatiwant](http://www.tamiu.edu/whatiwant)

#### Financial aid and scholarships

956-326-2225  
[www.tamiu.edu/affairs/financial](http://www.tamiu.edu/affairs/financial)



#### TAMIU HAS 10 FRIENDS

TAMU



TAMUG



PVAMU



Tarleton



TAMUCC



TAMUK



WTAMU



TAMUC



TAMUT



TOM





corpus christi, texas

your own private island

Home | Browse | Search | Invite | Mail | Blog | Favorites | Groups | Events | Teams | Music | Profs |

## Texas A&M University-Corpus Christi



"Is there only one Izzy?"

Four-year university  
60 years old  
Corpus Christi,  
TEXAS  
United States

My URL: [www.tamucc.edu](http://www.tamucc.edu)

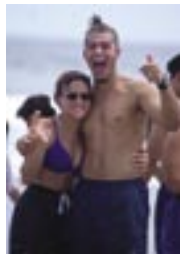
### MY DETAILS

Enrollment (Fall 2006)	8,600+
Average cost per 15 SCH (Fall 2006)	\$2,473
Average class size	30
Student-to-faculty ratio	18:1
Average financial aid award	\$6,524
Average freshmen SAT/ACT	SAT 950 / ACT 19

### GENERAL

#### MAJORS

36 undergraduate degrees. Business; history; communication; art; sociology; Spanish; health sciences; nursing; theater; biomedical sciences; chemistry; environmental sciences; control systems; computer science; geographic information sciences; mechanical engineering technology; psychology; more...and graduate degrees.



### The Islanders are in your extended network.



#### ABOUT ME

Located along the scenic Gulf Coast of South Texas in Corpus Christi (population 300,000), we're the only university in the United States situated on its own island.

Mascot: Islander  
Colors: Blue and green

#### INTERESTS

Sports clubs; intramurals; poetry boomba; literary guild; sororities; fraternities; criminal justice association; robotics society; philosophy club; math club; student government; islander cultural alliance; island waves; last act theater company; more...

#### SPORTS

Baseball; basketball; cheerleading; cross country; golf; softball; tennis; track & field; volleyball.

#### MORE ABOUT ME

##### Admissions

1-800-4TAMUCC or 361-825-2624  
[www.tamucc.edu/~admiss](http://www.tamucc.edu/~admiss)

##### Financial aid and scholarships

1-800-4TAMUCC or 361-825-2338  
[www.tamucc.edu/~faoweb](http://www.tamucc.edu/~faoweb)



#### TAMUCC HAS 10 FRIENDS

TAMU



TAMUG



PVAMU



Tarleton



TAMIU



TAMUK



WTAMU



TAMUC



TAMUT



TOM



# Kingsville, Texas

# A living legend

Home | Browse | Search | Invite | Mail | Blog | Favorites | Groups | Events | Teams | Music | Profs |

## Texas A&M University-Kingsville



"What is a javelina?"

Four-year university  
82 years old  
Kingsville,  
TEXAS  
United States

My URL: [www.tamuk.edu](http://www.tamuk.edu)

### MY DETAILS

Enrollment (Fall 2006)	6,671
Average cost per 15 SCH (Fall 2006)	\$2,163
Average class size	22
Student-to-faculty ratio	16:1
Average financial aid award	\$3,835 grants; \$5,490 loans
Average freshmen SAT/ACT	SAT 918 / ACT 18

### GENERAL

#### MAJORS

56 undergraduate degrees. Technology; wildlife sciences; communication sciences and disorders; logistics; fashion and interiors merchandising; marketing; international business management; engineering; journalism; theater arts; pre-health professional programs (medical; dental; pharmacy; nursing); more...and graduate degrees. The university also offers upper-division and master's-level degree programs at its center in San Antonio.



The Javelinas are in your extended network.



### ABOUT ME

Located in a friendly city of 25,000 that is the home of the legendary King Ranch. Corpus Christi and its beaches are just 40 miles to the northeast.

Mascot: Javelina  
Colors: Blue and gold

### INTERESTS

More than 100 different organizations are registered on campus. You can even start a new one if we don't have what you want already!

### SPORTS

Football; baseball; basketball; cross country; track & field; volleyball; softball.

### MORE ABOUT ME

#### Admissions

361-593-2315  
[www.tamuk.edu/admissions](http://www.tamuk.edu/admissions)

#### Financial aid and scholarships

361-593-3911  
[scholarships.tamuk.edu](http://scholarships.tamuk.edu)  
[www.tamuk.edu/finaid](http://www.tamuk.edu/finaid)



### TAMUK HAS 10 FRIENDS

TAMU



TAMUG



PVAMU



Tarleton



TAMIU



TAMUCC



WTAMU



TAMUC



TAMUT



TOM



canyon, texas

higher education in the high plains

Home | Browse | Search | Invite | Mail | Blog | Favorites | Groups | Events | Teams | Music | Profs |

## West Texas A&M University



"Ehhhhhhvry-buddy uppppp!"

Four-year university  
97 years old  
Canyon,  
TEXAS  
United States

My URL: [www.wtamu.edu](http://www.wtamu.edu)

### MY DETAILS

Enrollment (Fall 2006)	7,429
Average cost per 15 SCH (Fall 2006)	
Tuition only	\$1,605
Fees, room, board, etc.	\$4,948
Average class size	26
Student-to-faculty ratio	24:1
Average financial aid award	\$6,202
Average freshmen SAT/ACT	SAT 1010 / ACT 21

### GENERAL

#### MAJORS

61 undergraduate degrees. Agriculture; business; fine arts; mechanical engineering; nursing; teacher preparation; environmental science; equine industry; business; emergency management administration; music therapy; more...and graduate degrees.

#### UNDERGRADUATE ONLINE DEGREES

Emergency management administration; general studies; RN-BSN degree completion program; bachelor of applied arts and sciences; online graduate degrees.



The Buffaloes are in your extended network.



### ABOUT ME

Located 12 miles south of the bright lights of Amarillo (population 160,000) — within driving distance of the ski slopes and hiking trails of Colorado and New Mexico.

Nickname: Buffaloes  
(Bufs and Lady Bufs)  
Mascot: Thunder VIII (Jack)  
Thunder IX (Liz)  
Colors: Maroon and white

### INTERESTS

Advertising federation; anime club; cycling club; environmental science society; national broadcasting society; rodeo club; horse judging; intramurals; fraternities; sororities; more...

### SPORTS

Baseball; basketball; cross country; equestrian; football; golf; soccer; softball; volleyball.

### MORE ABOUT ME

#### Admissions

1-800-99-WTAMU  
[www.wtamu.edu/admissions](http://www.wtamu.edu/admissions)

#### Financial aid and scholarships

806-651-2055  
[www.wtamu.edu/scholarships](http://www.wtamu.edu/scholarships)



### WTAMU HAS 10 FRIENDS

TAMU



TAMUG



PVAMU



Tarleton



TAMIU



TAMUCC



TAMUK



TAMUC



TAMUT



TOM



Commerce, Texas

A great place to live, work, play and educate

Home | Browse | Search | Invite | Mail | Blog | Favorites | Groups | Events | Teams | Music | Profs |

## Texas A&M University-Commerce



"Roughly halfway between NYC and LA."

Four-year university  
118 years old  
Commerce,  
TEXAS  
United States

My URL: [www.tamu-commerce.edu](http://www.tamu-commerce.edu)

### MY DETAILS

Enrollment (Fall 2006)	8,496
Average cost per 15 SCH (Fall 2006)	\$2,308
Average class size	24
Student-to-faculty ratio	17.8:1
Average financial aid award	\$10,487
Average freshmen SAT/ACT scores	SAT 930 / ACT 20

### GENERAL

#### MAJORS

66 undergraduate degrees. Design communications; education; photography; studio arts (ceramics; painting; sculpting; experimental studies); journalism; radio/television; music; biological and environmental sciences; sports studies; psychology; industrial engineering; more...and graduate degrees.



#### UNDERGRADUATE ONLINE DEGREES

Bachelor of applied arts and sciences; online graduate degrees.

The Lions are in your extended network.



#### ABOUT ME

Located in Commerce (population 7,600), about an hour from Dallas in the rolling hills of northeast Texas.

Mascot: Lions/Lady Lions  
Colors: Blue and gold

#### INTERESTS

Student government association; fraternities; sororities; outdoor adventure club; student art league; clay club; cricket city improv; equestrian team & club; horticultural club; roller hockey club; rodeo club; third floor photo society; wildlife society student chapter; more...

#### SPORTS

Football; basketball; baseball; cross country; golf; soccer; track & field; volleyball.

#### MORE ABOUT ME

##### Admissions

903-886-5102

[www.tamu-commerce.edu](http://www.tamu-commerce.edu)

##### Financial aid and scholarships

903-886-5096

[www.tamu-commerce.edu/financial-aid](http://www.tamu-commerce.edu/financial-aid)



#### TAMUC HAS 10 FRIENDS

TAMU



TAMUG



PVAMU



Tarleton



TAMIU



TAMUCC



TAMUK



WTAMU



TAMUT



TOM





texarkana texas somewhere between beethoven and boot scootin

Home | Browse | Search | Invite | Mail | Blog | Favorites | Groups | Events | Teams | Music | Profs |

## Texas A&M University-Texarkana



"Southern charm and Wild West spirit."

Two-year, upper-level university  
36 years old  
Texarkana,  
TEXAS  
United States

My URL: [www.tamut.edu](http://www.tamut.edu)

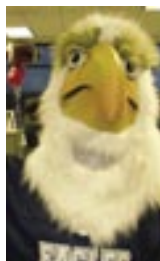
### MY DETAILS

Enrollment (Fall 2006)	1,624
Average cost per 15 SCH (fall 2006)	\$1,650
Average class size	16
Student-to-faculty ratio	14:1
Average financial aid award	\$5,337

### GENERAL

#### MAJORS

21 undergraduate degrees. Accounting; human resource management; international business; English; history; psychology; education; nursing; mass communications; biology; computer and information sciences; sociology; counseling; more... and graduate degrees.



#### ACCELERATED UNDERGRADUATE DEGREE PROGRAMS

Bachelor of applied arts and sciences; alternative teacher certification program.

The Eagles are in your extended network.



#### ABOUT ME

Located in Texarkana (population 65,750), on the border of Texas and Arkansas. Texarkana is where the south meets the west in twin cities filled with history and natural beauty.

Nickname: Eagles  
Mascot: ACE the Eagle  
Colors: Blue, gold and maroon

#### INTERESTS

Accounting club; computer club; education club; marketing club; sociology society; student council for exceptional children; intramurals; sororities; fraternities; more...

#### MORE ABOUT ME

##### Admissions

903-223-3069

[www.tamut.edu/admissions](http://www.tamut.edu/admissions)

##### Financial aid

903-223-3066

[www.tamut.edu/finaid](http://www.tamut.edu/finaid)

##### Scholarships

903-223-3066

[www.tamut.edu/recruitment](http://www.tamut.edu/recruitment)



### TAMUT HAS 10 FRIENDS

TAMU



TAMUG



PVAMU



Tarleton



TAMIU



TAMUCC



TAMUK



WTAMU



TAMUC



TOM





## MyChecklist

- Have you talked with your high school counselor about necessary preparatory courses for college?*
- Have you talked with your parents about supporting your efforts to go to college?*
- Do you know what areas you might like to study in college?*
- Have you located institutions that offer degrees in those areas?*
- Do you want to go to college close to home, far away or does it matter?*
- Have you contacted the institution(s) you are interested in to have them send you information about their application process, cost, financial aid availability and degree programs?*
- Have you scheduled a campus visit to the institution(s) you are interested in?*
- Did you know that [www.collegefortexans.com](http://www.collegefortexans.com) has a free SAT/ACT test prep program to help you prepare?*
- Have you taken the SAT or ACT? Do the institutions you are applying to require one or the other?*
- If you have not taken the SAT or ACT, have you registered for the next available testing period?*
- Have you submitted the Free Application for Student Financial Aid (FAFSA) to be eligible for financial aid?*
- What are the application deadlines for the institutions to which you are applying?*
- Have you requested individuals who know you well to write letters of recommendation for you?*
- Have you prepared entrance essays for inclusion into your applications if required?*
- Have you had family members, teachers or friends review your essays?*
- Have you completed your online application?*
- Have you requested that high school transcripts be sent to the institutions to which you have applied?*
- If you are a transfer student, have you satisfied the requirements for the Texas Success Initiative? If you are not sure, check with the admissions office at the institution you are interested.*



[www.tamus.edu/myfuture](http://www.tamus.edu/myfuture)

*We want to know what you want to know about getting into college. So while you're surfing the web, why not take a few minutes to tell us what you think about this brochure and how we can make it better.*

[www.applytexas.org](http://www.applytexas.org)

*Apply to every public university and some private institutions in this one online application.*

[www.fafsa.edu.gov](http://www.fafsa.edu.gov)

*Most financial aid programs require students and their parents to fill out the Free Application for Student Financial Aid (FAFSA) in order to be eligible for scholarships, grants and some types of loans.*

[www.collegefortexans.com](http://www.collegefortexans.com)

*Has a wide variety of college materials including links to necessary courses to take in high school, how to apply to colleges and how to apply for financial aid. It also offers the free SAT/ACT online test prep program, TOPCAT.*

[www.collegeboard.com/student/testing/sat/reg.html](http://www.collegeboard.com/student/testing/sat/reg.html)

*Register online for the SAT.*

[www.actstudent.org/regist/elegreg.html](http://www.actstudent.org/regist/elegreg.html)

*Register online for the ACT.*

[https://www.applytexas.org/adappc/the\\_cb\\_pdf.pdf](https://www.applytexas.org/adappc/the_cb_pdf.pdf)

*Find out the high school curriculum requirements and minimum GPA/SAT scores for admission to Texas public universities.*

[www.collegefortexans.com/cfbin/EdOppsUHRI.cfm](http://www.collegefortexans.com/cfbin/EdOppsUHRI.cfm)

*Search for degrees you're interested in, or find out what degrees are offered at an individual institution.*

[www.nsls.ed.gov/nsls\\_SA](http://www.nsls.ed.gov/nsls_SA)

National Student Loan Data System (NSLDS)

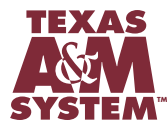
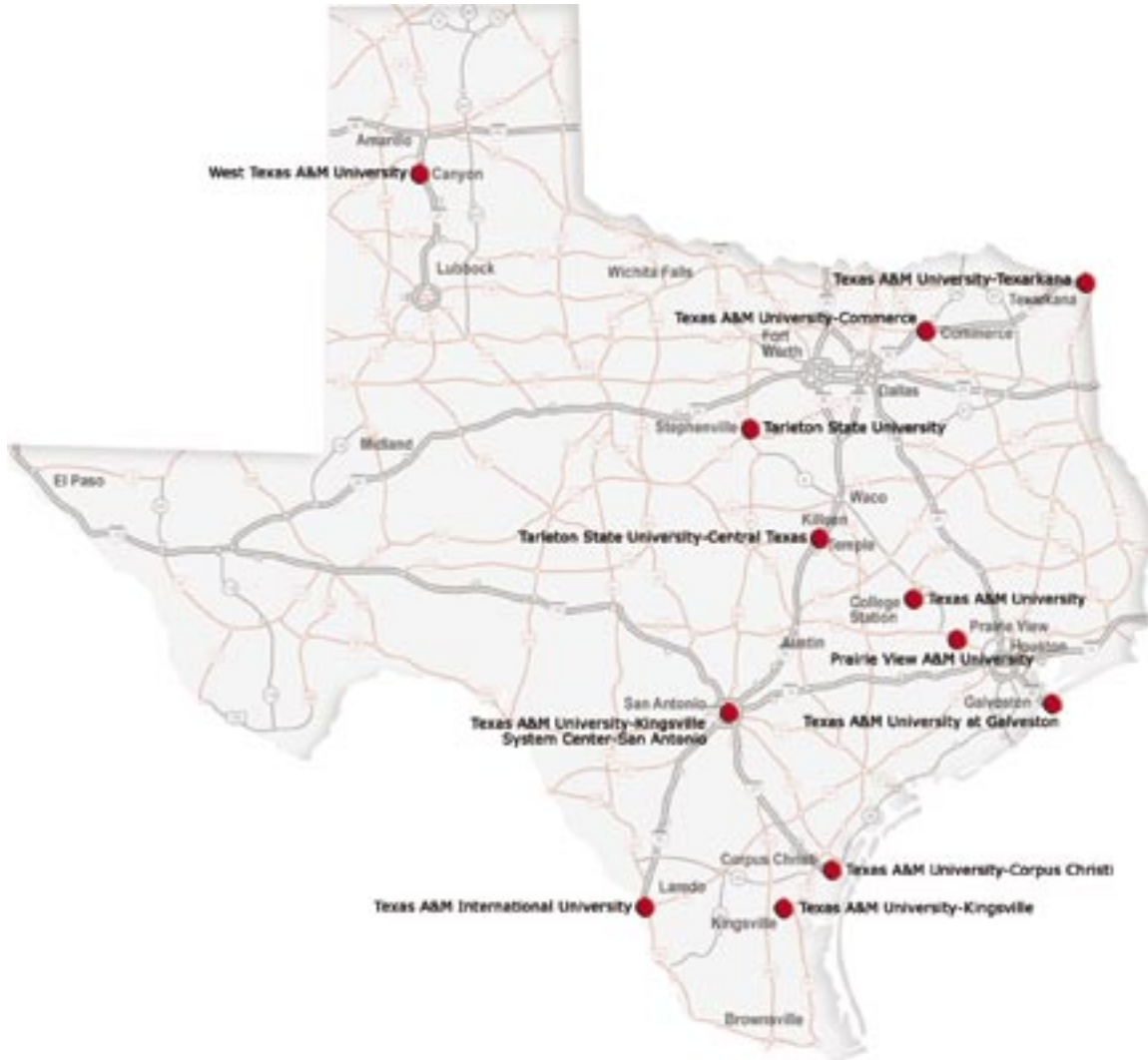
*The U.S. Department of Education's central database for student aid.*

[www.sss.gov](http://www.sss.gov)

*All men 18-25 must register with the Selective Service System. You can register online or at any U.S. post office.*

[www.knowhow2go.org](http://www.knowhow2go.org)

*Informational website for college-bound students.*



200 Technology Way  
College Station, TX 77845-3424  
800-882-4492  
[www.tamus.edu](http://www.tamus.edu)