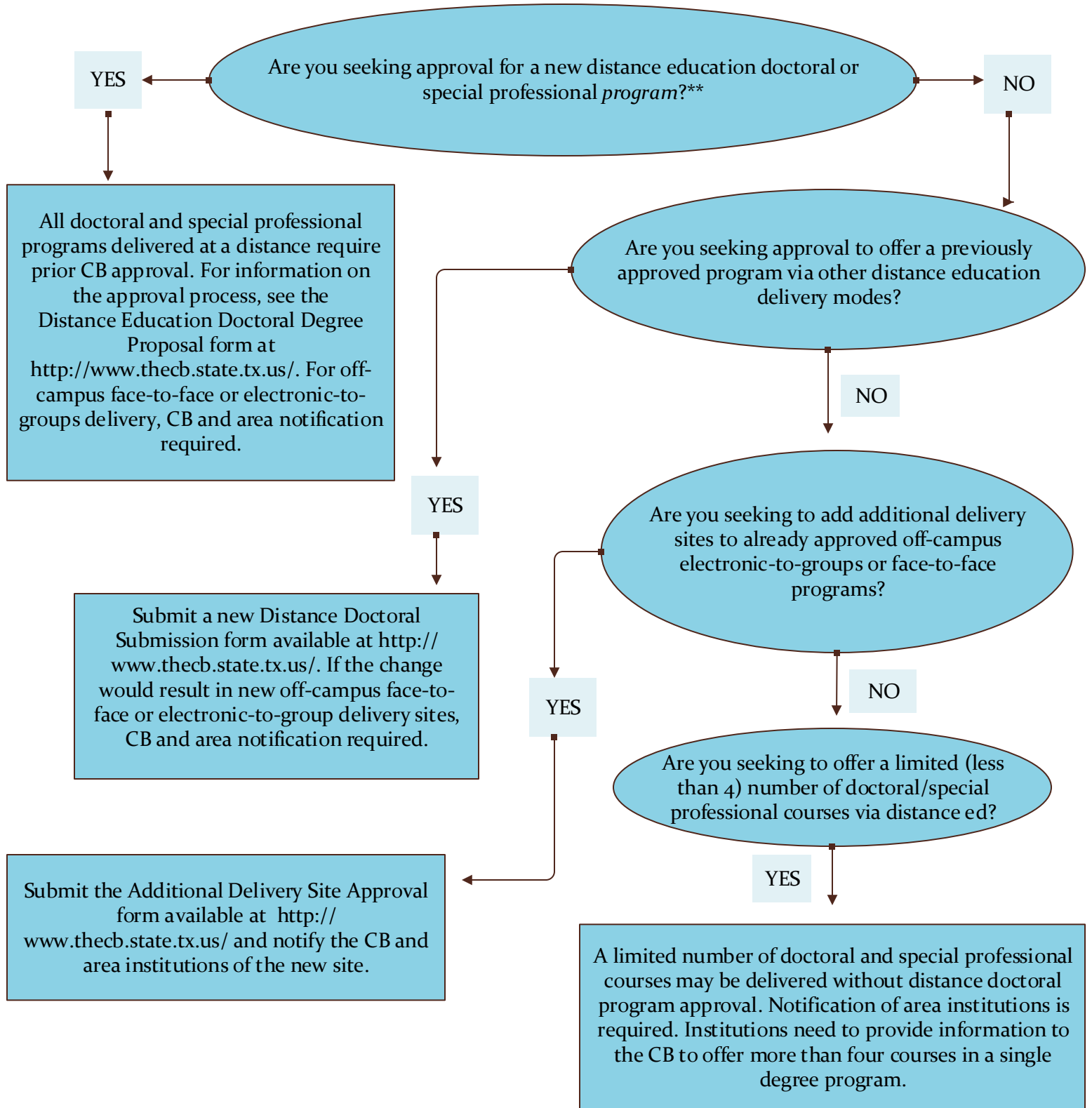


**Texas Distance Education Program Approval Process  
Doctoral and Special Professional Degree Programs and Courses  
Universities and Health-Related Institutions\***



\*For Institutions with Approved Institutional Reports and Certifying Compliance with Subchapters P and Q and *The Principles of Good Practice*

\*\*A doctoral or special professional degree program is considered distance education when over half of the semester credit hours, excluding dissertation and research, may be completed without the student being in residence on campus.