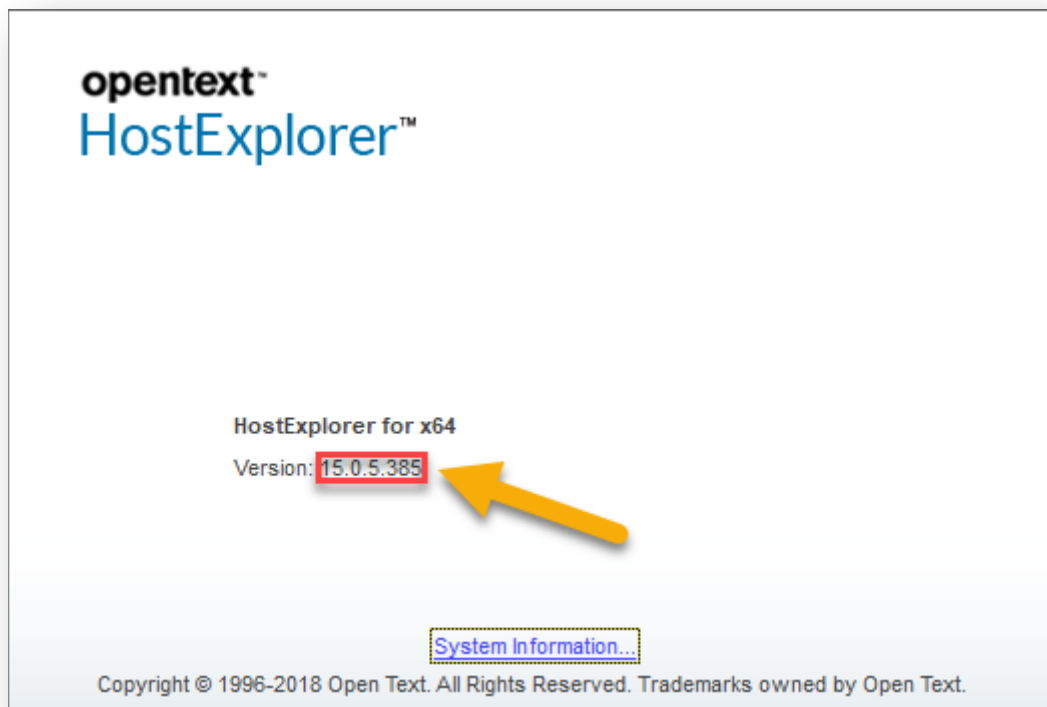
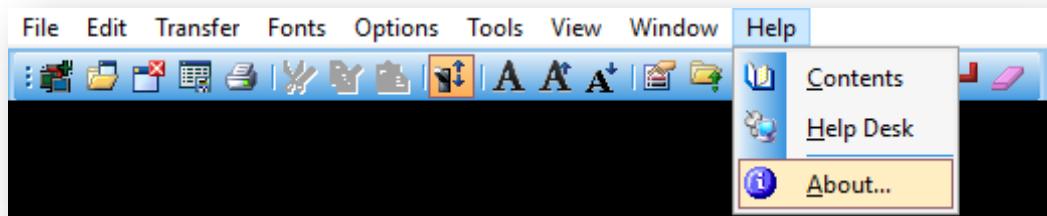


Open Text Host Explorer Installation and Setup

OpenText Host Explorer (formerly Hummingbird) is the terminal emulation software that allows users to connect their PC to FAMIS on the mainframe in a secure environment. Users are required to utilize a version of Open Text Host Explorer which allows for TLS 1.1 or higher. The current recommended version of this software is now version 15.0.5.385.

Checking Your OpenText HostExplorer Version

To check your version of the Opentext HostExplorer (Hummingbird), please open it and click to "Help". If your version starts with 14, we recommend that you upgrade to version 15.



Obtaining Version 15

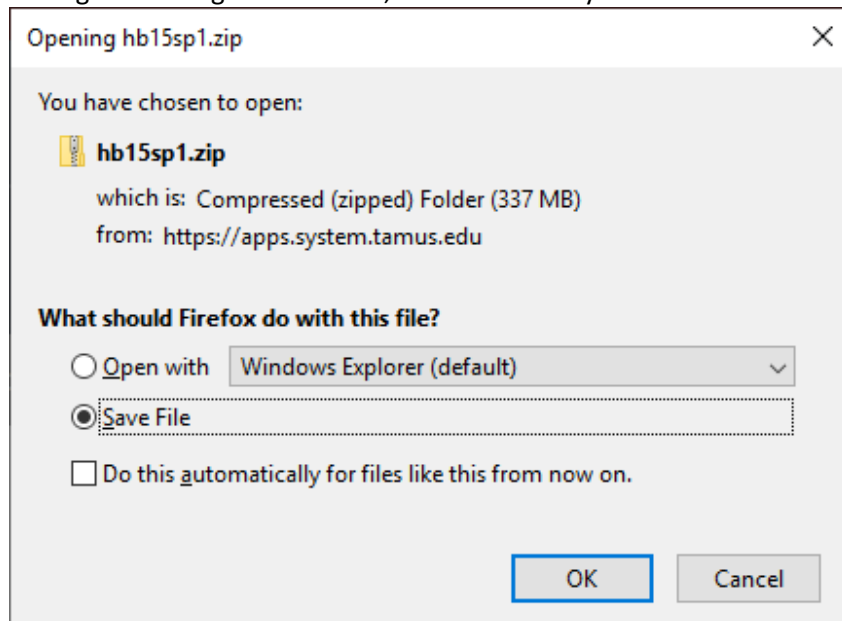
To get version 15 (Host Explorer 2015), follow the instructions below.

SELL recommends you use the latest version of Open Text Host Explorer (formerly Hummingbird). If you don't already have this, you can request it through ITSelf-Service<<https://tamu.service-now.com/tamu-selfservice/>>:

1. Open the Services pull down menu near the top of the page and select "Order Software"
2. Find "Hummingbird"
3. Follow the login instructions and complete your order

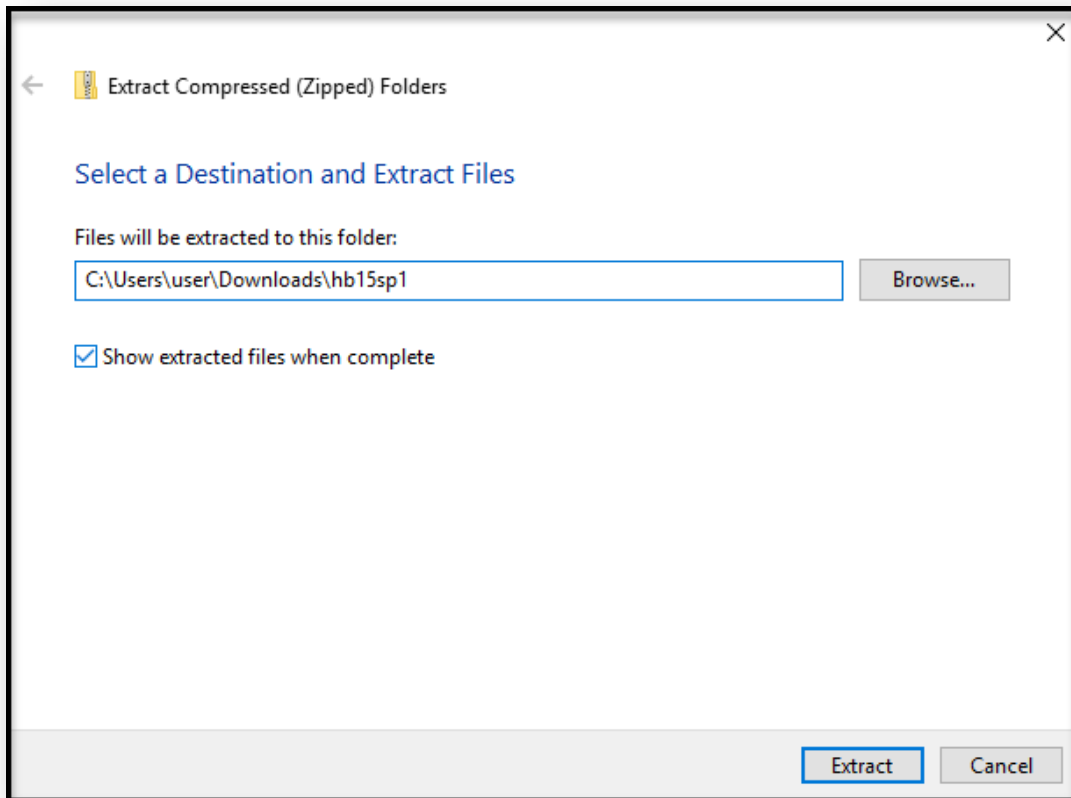
You may also obtain a copy by bringing a blank CD to the Software Evaluation and Licensing Library (SELL) which is located in room 1105 of the Computing Services Center building.

To begin installing the software, click on the file you obtained from SELL.



Open Text Host Explorer Installation and Setup (cont'd)

After the file has downloaded, right click the file and select Extract All. Then select a destination to extract the files and then press the Extract button.

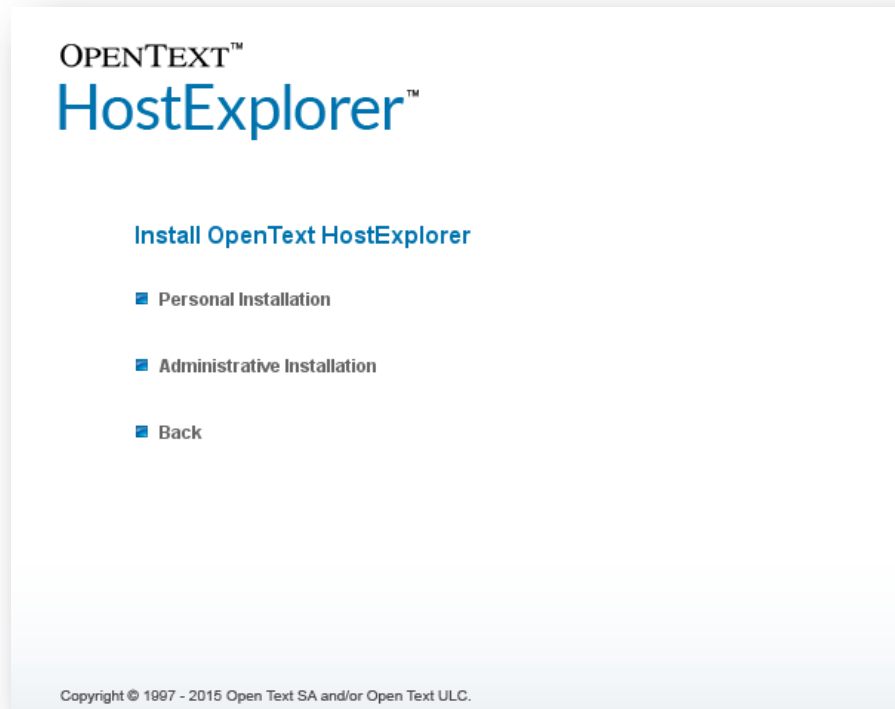


After the extraction is complete, double-click Open Text HostExplorer 15 file to begin the installation.

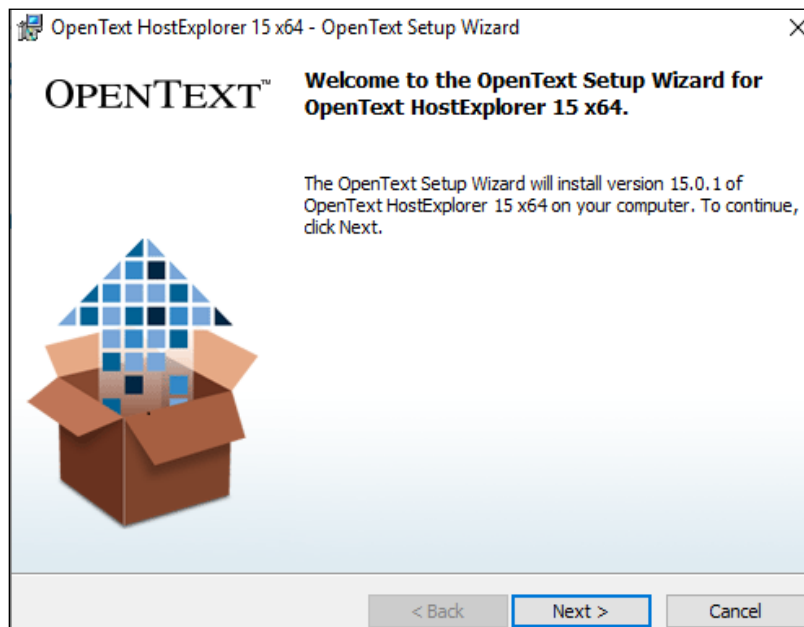
Installing OpenText 2015

After extracted file, you will see 'Open Text HostExplorer 15'.

Open the file and click **Personal Installation**

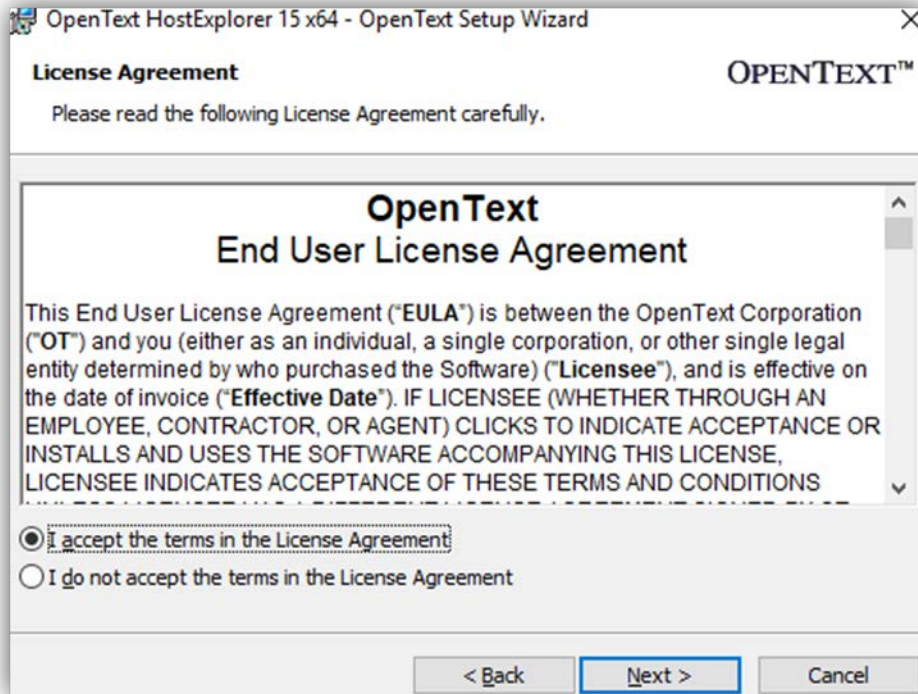


Click **Next**

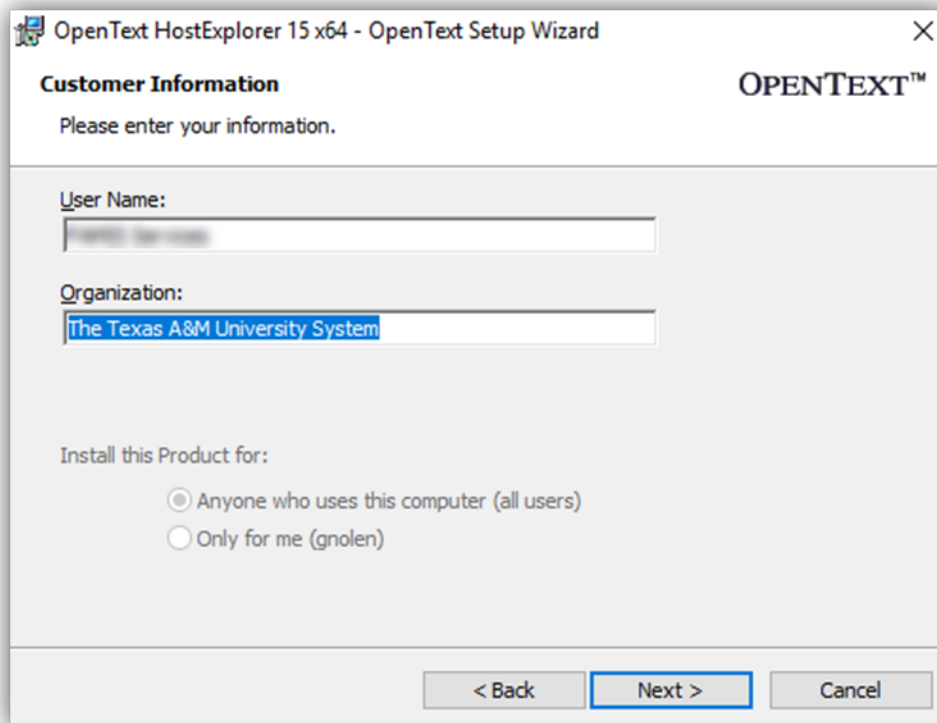


Open Text Host Explorer Installation and Setup (cont'd)

Click **I accept...** and click **Next**

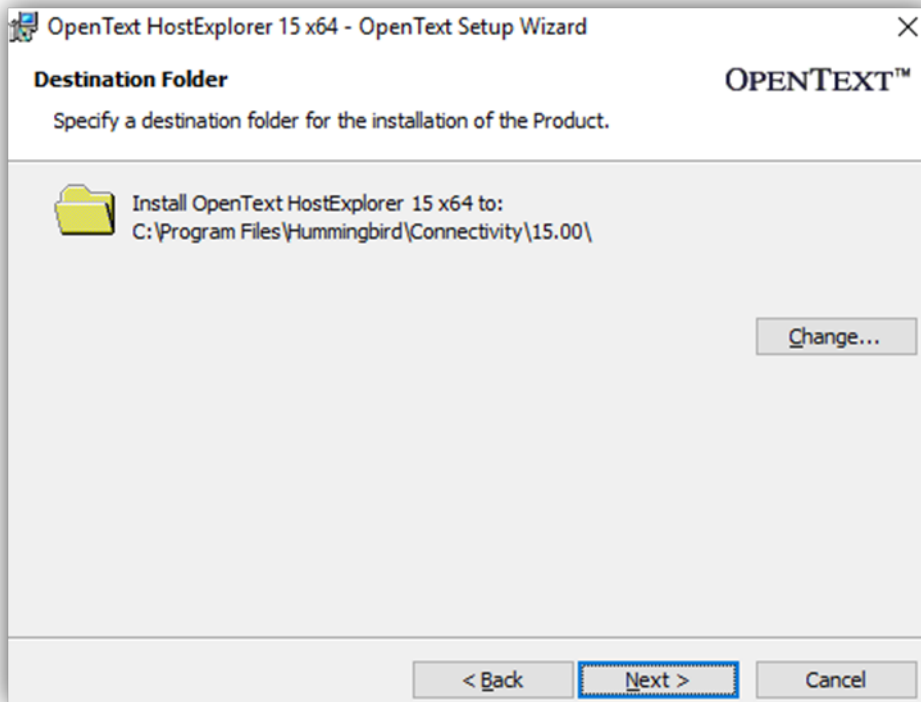


Enter your username and organization and click **Next**

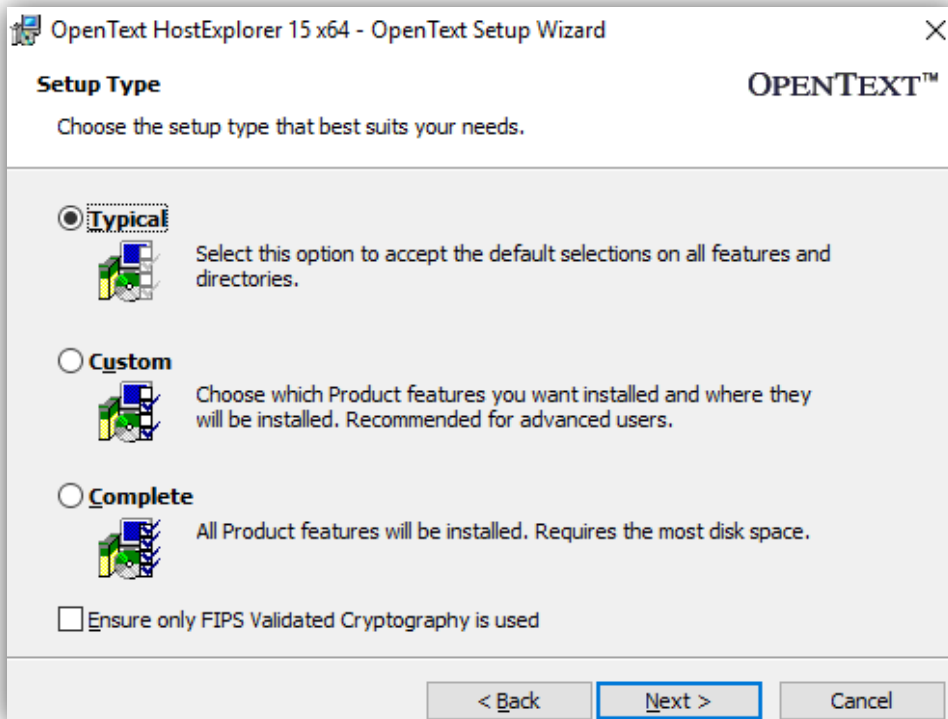


Open Text Host Explorer Installation and Setup (cont'd)

Click **Next**

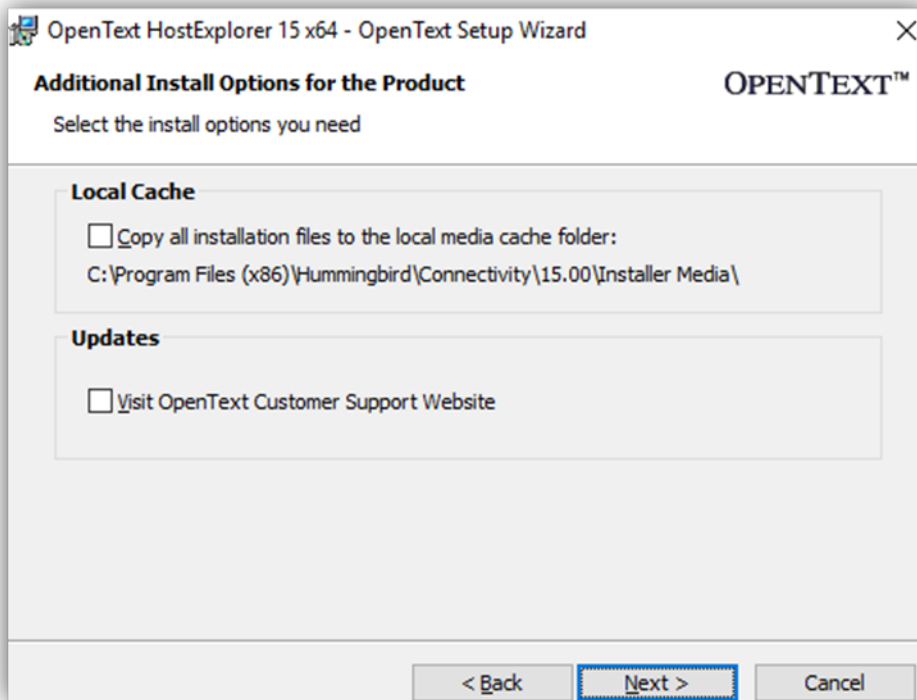


Choose **Typical** then click **Next**

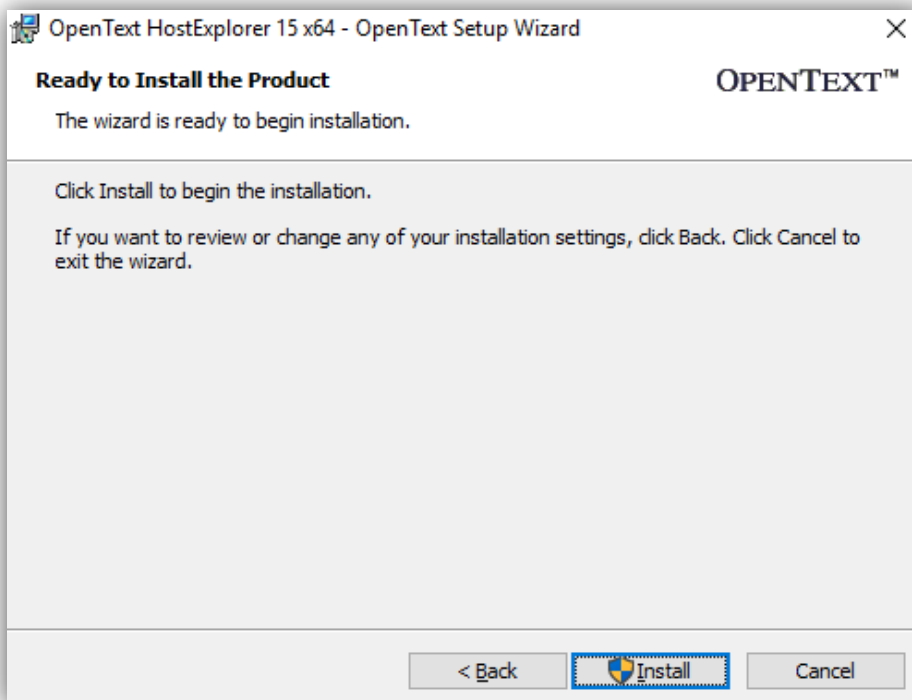


Open Text Host Explorer Installation and Setup (cont'd)

Click **Next**



Click **Install**



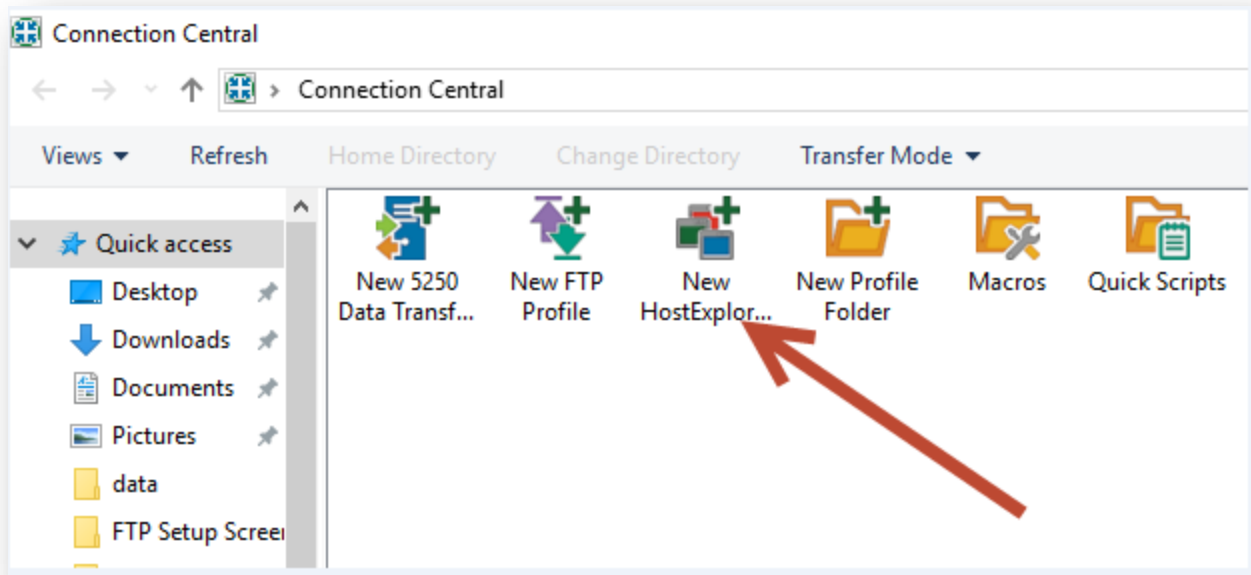
After installation has completed, click **Finish** to complete the process.

Configuring OpenText 2015

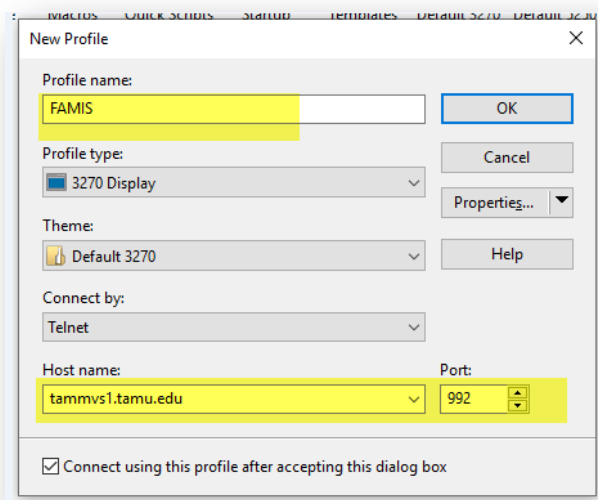
Begin using Host Explorer Connection:

- Click on Start
 - Opentext Host Explorer
 - Connection Central

Begin setting up your FAMIS icon by double clicking the New HostExplorer FTP icon.



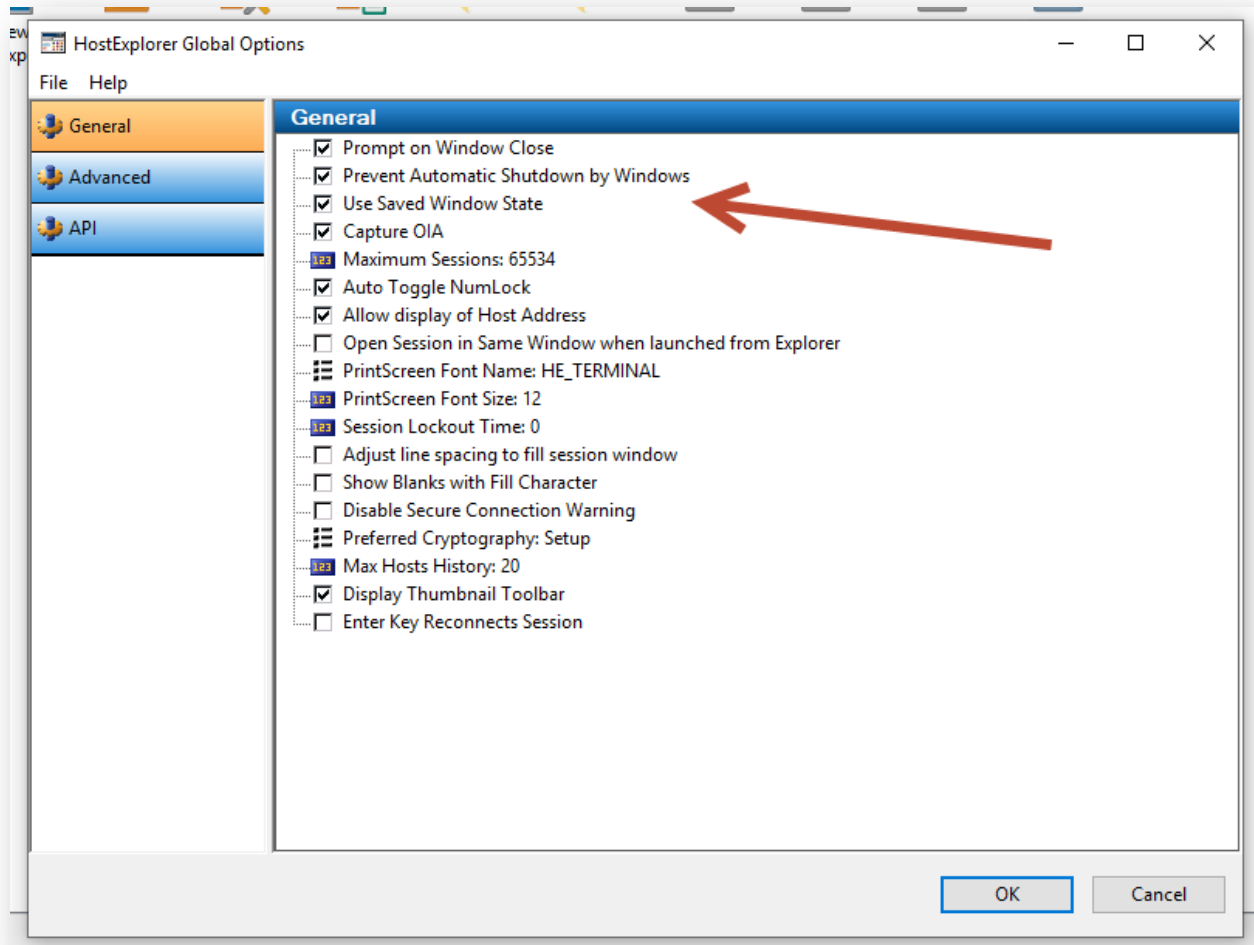
When the New Profile Screen appears, choose a name for your Profile (FAMIS is used in the example below), and enter the Host Name and Port:



Open Text Host Explorer Installation and Setup (cont'd)

Click the OK button on the New Profile window, and the software will attempt to connect to FAMIS. This connection will fail. Upon failure, proceed with the following steps.

- Click on **Options**
- Click on **Global**
- Select **Prompt on Window Close**
- Select **Prevent Automatic Shutdown by Windows**
- Click the **OK** button



- Click on the **Options** top-menu item
- Click on the **Session Properties...** pop-up menu item
- Click on + (expand) icon beside the "Security" tree item
- Click on the **General** tree item
- Select the **SSL / TLS** radio button
- Click the **OK** button

Open Text Host Explorer Installation and Setup (cont'd)

- Click the **Options** top-menu item
- Click on the **Session Properties...** pop-up menu item
- Click on the **+** icon beside the "Keyboard" tree item
- Click the **General** tree item
- Unselect **Ignore NumLock state**
- Click the **OK** button

At this time all setting should be complete. Click the Toggle connection icon in the menu to connect to FAMIS.

